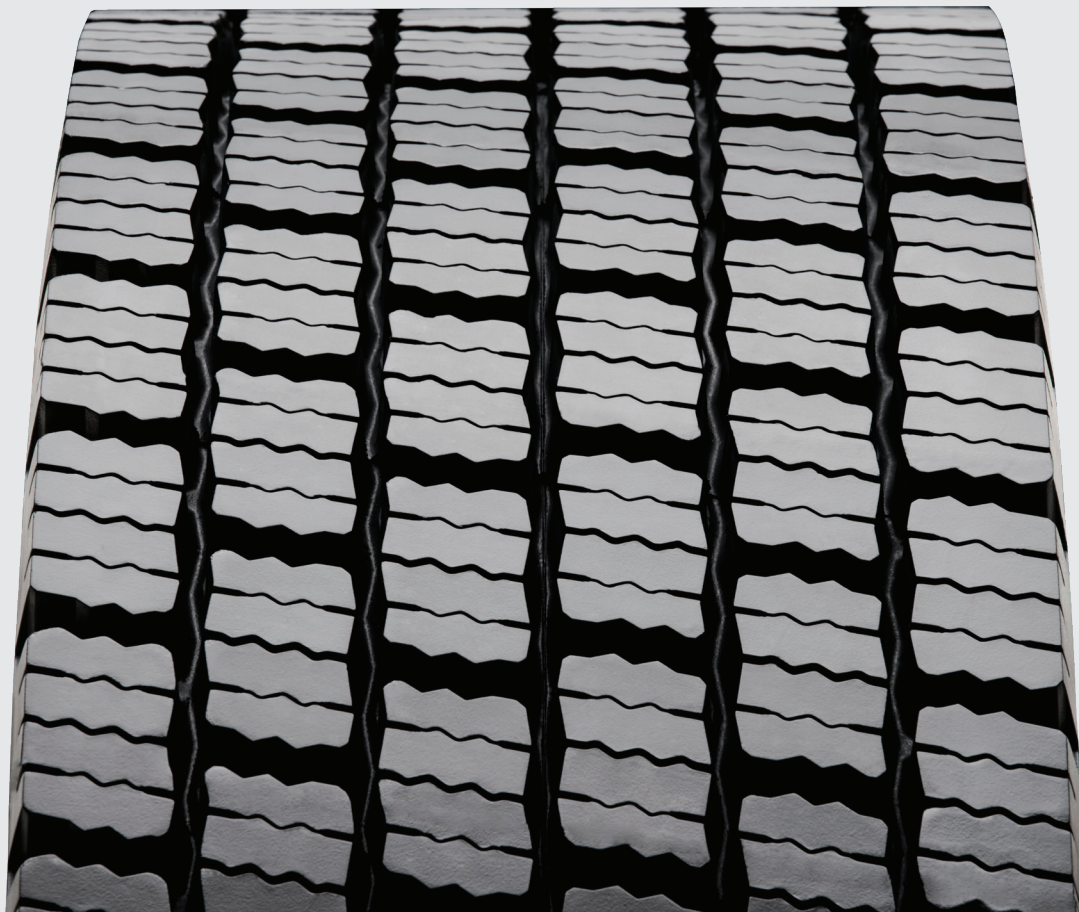


Launching - VT105 tread

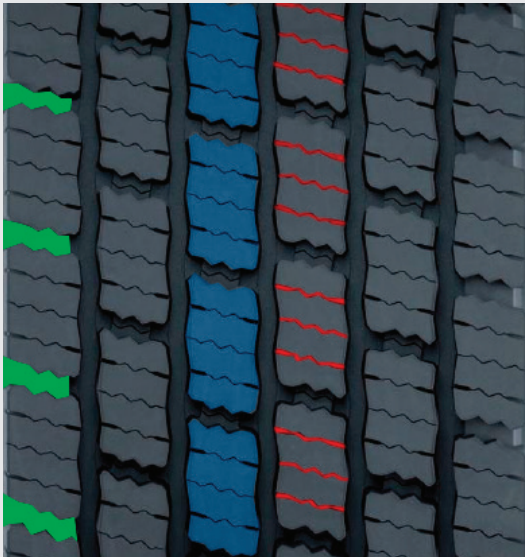
Vipal is launching its new snow tread **VT105**, which provides excellent traction power and self-cleaning. The tread's special compound ensures good adhesion at extremely low temperatures and excellent mileage performance. These benefits are certified by the M+S and 3PMSF markings, also known as Alpine Symbol.





VT105 means:

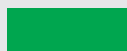
V	Vipal tread
T	Tread recommended for use in drive axles
105	Hundreds 100 and 200 represent treads for radial tyres use in highways and paved streets

Check out the main features of the new design:



 Transversal blocks that allows excellent traction power.

 Deep sipes for better tread blocks movement, enabling the self-cleaning of the tread and better grip in snow conditions.

 Transversal grooves with ties bars providing greater support in the base of the blocks.

Recommended application



Snow



Highway

Optional application



Regional

Construction



Radial



Mud and Snow



Alpine symbol

Axles



Drive

Vehicles



Medium duty Truck (Tandem axle)



Single axle
Tractor Truck



Tandem axle Tractor Truck

Technical information:

Code	Description	N#							
			mm	in	kg / m	lb / ft	mm	in	Recommended tyre
507201	VT 105 (M)	11.0	250	9 3/4	5,86	3.93	22,5	28/32	295 305 315 12.00 13.00
507202	VL 105 (P)	11.0	260	10 1/4	6,08	4.08	22,5	28/32	295 315 13.00
507200	VT 105 (M)	11.5	270	10 3/4	6,34	4.26	22,5	28/32	305 315 13.00
507203	VT 105 (M)	11.5	280	11	6,58	4.42	22,5	28/32	315

The product is available for sale in all countries except Brazil.